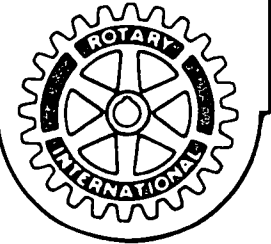


BLASTOFF

News Bulletin for the
Space Center Rotary Club

Meets every Monday at 11:45 a.m.
Holiday Inn, Nassau Bay

DISTRICT 589



"Rotary brings hope"

Rotary International President, M.A.T. Caparas
District 589 Governor, Walter Lackey
Club President, Jim Hargrove
Editor, Tom Wier

JULY 7, 1986

PROGRAMS

Don Kirk, Chairman

Responsibility-for July: Jerry Smith

- | | |
|---------|---|
| JULY 7 | Ross Seger , Arabia Temple Shrine Burn Inst. |
| JULY 14 | Ellen Hebert , The Family Outreach Center |
| JULY 21 | Chad Merrill , Checknology. Hot checks |
| JULY 28 | Ms Milan , Hurricane Preparedness |

PROGRAM NOTES

by John Francis

MEETING OF JUNE 23: Dr. Joseph Jachimczyk, the Harris County Medical Examiner, was the guest speaker for our luncheon meeting. He was introduced by Rotarian Larry Watson, substituting for Gene Lindquist. (I want everyone to get proper credit for bringing us Dr. Jachimczyk's delightful lunchtime chat.) Actually, Dr. Jachimczyk's presentation was a fascinating disclosure of the advancements in technology and techniques for determining the circumstances surrounding someone's mysterious death. It reminded me of the process of determining the cause of an aircraft accident. There were a lot of similarities in the photographs, too; those that I managed to watch. For those of you who missed the presentation, Dr. Jachimczyk described several case histories to illustrate the investigative techniques that his team uses to determine how someone has died (or been killed). He showed us a number of slides to make sure we got the message. Each picture was certainly worth a 1000 words. This program was certainly one that I won't soon forget.

MEETING OF JUNE 30: The entire program on this day was taken up in the ceremony for installing our new officers. Brand new District Governor Walt Lackey presided over the noontime activities. After the formal installation, Past President Bob Wren recapped a Rotary year for which all of the members and leadership of Space Center Club can be proud. The impression that stuck with me as I listened to Bob cover the myriad of things that went on this past year, was that we really have our work cut out for us this coming year. I wish all of our new leaders inspiration, fortitude, and luck in accomplishing our goals for 1986-1987. And I implore all 170 of you to get involved. The challenges are great, but so are the rewards.

SHRIMPOREE

ACTION STARTS

The prime beneficiary and other beneficiaries of the 1986 Shrimporee were selected in an evening-long series of interviews with candidates on Monday evening, June 30. Terry Hesson, chairman for the 1986 Shrimporee announced that the committee has chosen the Clear Lake Emergency Medical Corp as the prime beneficiary. Other beneficiaries will be announced later and will be listed on the Shrimporee tickets to assist you in answering questions during ticket sales. Remember, the date is September 20.

Golf ***Chairman Bob

Frost announced the next club golf fellowship for July 31 at Baywood. Join the fun!!!

SPEAKERS-----

Stories on page 1. In the first picture, we have our own Dr. Larry Watson and June 23 speaker Harris County Medical Examiner Dr. Joseph Jachimczyk.

District 589 Governor Walt Lackey gave us some proper reminders of the basic principles of Rotary and the Four Way Test as he wove these into the induction of new members (p. 5) and the installation of officers (p. 3) on June 30.



LOOK AT OUR NEW DISTRICT GOVERNOR---

Walt Lackey is a real go-getter who is at his office by 6 AM every morning. As District Manager of Southwestern Bell Telephone Co., he is known as a strong motivator. And as District Governor, we can be sure things are going to move!

He is quick to point proudly to the fact that he has been married to Rosalyn for 31 years, has 4 children and 3 grandchildren. Born and raised in central Texas, Walt graced the campuses of UT, Lamar, and UH. Walt has been in Rotary for 13 years, is a member of the Pearland club, president of it in 79/80. He has worked at the District level since '80, chairing the Vocational Service Committee, the Community Service Committee, the Committee on Communication and Information, and has been a zone representative. He is a past president of the Pearland Chamber of Commerce (2 times). He is going to keep us hustling!

Rotary Wives

Patricia Hargrove, wife of club president Jim Hargrove, will head the Space Center Rotary Wives group for the new Rotary year. The group is off to a fast start on a fund raising project that they hope will allow them to name a Paul Harris Fellow. As Sue Hardwick told us Monday, they have bought out the house for the Shaw Festival performance of "Arms and the Man" at UHCLC for the night of Saturday, August 2. Tickets are \$10. What a wonderful way to bring the club members and wives together for a fun and fellowship time. Let's all go have a good time at this highly praised Shaw comedy.

The next luncheon meeting of the Rotary Wives is tomorrow (the second Tuesday of the month, as usual) and this luncheon will be at the Compass Rose Restaurant at the Clear Lake Hilton. Time: 12 NOON.

We can't pass without a big hand for Anne Weseman for the diligent work she did in heading the Rotary Wives during the past year. All the ladies thank you, Anne! The club also thanks you for adding this dimension to the club. Ladies, there is a great deal that your participation can mean to Space Center Rotary.

HAPPY BIRTHDAY

JIM WYATT	7/7
JOE SKELLY	7/8
ROBERT DUGAN	7/12
DAVID CANTU	7/18

NEW OFFICERS AND DIRECTORS

You will find a complete list of the officers and directors for the 1986/87 Rotary year on the mailing segment (last page) of this Blastoff. President-Elect Jim McNatt, Immediate Past President Bob Wren, and current President Jim Hargrove received installation together from District Governor Walt Lackey, at left rear.+++ Directors and Officers available for photo after the June 30 installation are: Billy Ray Smith, PDG Floyd Boze, John Francis, Charles Hardwick, John Watson, Bob Wren, Jim Hargrove, Jim McNatt, Lamar Bowles, Ralph Schimmel, and Terry Hesson.+++ In the bottom photo, President Jim is presenting Past President Bob with a lapel pin and plaque in appreciation of his leadership. Thank you, Bob!



JUNE'S \$50 CONTRIBUTOR'S

Bay Area Printing, Inc.

Full Service Print Shop

Printing, Blue Printing,
High Speed Copying

Joseph Hang 488-4900

H. DON KIRK

President

Security Bank, N.A.

-Bay Area

Member FDIC

Pe-Te

Cajun Bar-B-Q House

11902 Hwy 3 at Ellington AFB

Les Johnson- Owner

Jim Hargrove

— BOTTOM LINE —

R. David King, P.C.

A Professional Corporation of CPA's.

SERVICES FOR BUSINESSES
and INDIVIDUALS

488-7273

JOE E. SHIRLEY, DDS, Inc

GENERAL DENTISTRY

CARLOS BARBER SHOP

Only Regular Barber Shop

in Town

Men Only

Hwy 3 Webster 332-2587



Blue Seas Travel

615 Kirby Rd.
Seabrook, Texas 77586

(713) 326-1012

OWNERS - BETTY & JIM SHOWS



SPACE CENTER ROTARY DONATES FUNDS TO SENIOR CITIZENS GROUPS

Three local senior citizens groups each received a check for \$500 from our club in a presentation by Steve Waldner on June 23. Steve is shown below presenting the checks to Faye Mabry, representing the AARP, to Woody McHarg, representing the Sheltering Arms Agency, and to Hugh Rogers, representing the Sunshine Club. Retiring president Bob Wren participates at right.



GOVERNOR POTTER'S YEAR-END SUMMARY

DISTRICT 589 ACCOMPLISHMENTS DURING 1985/1986

1. Youth Exchange is beginning to be active. PDG Dave Hill had started the trend. We are sending ten students to Australia and ten students to England this summer. Have one of them give a program upon their return.
2. A District office will be a reality soon.
3. Even though we lost the North Forest Club, we added two new clubs.
4. We completed a successful couples exchange with a District in Canada.
5. We were delighted with the GSE team from India.
6. Your fundraisers continued to produce funds for your Community Service.
7. The District Conference was very successful.
8. The "Letters for Peace" contest produced a great applicant to submit to RI.
9. The 3-H eyeglass and work in Mexico was an outstanding effort.
10. The used hospital equipment project is launched.
11. Interact and Rotoract Clubs are doing well.
12. We were able to select a record number of Foundation Scholars.
13. We participated in more interclub visits.

+++++AND THAT WASN'T ALL !!!+++++

JUNE'S \$50 CONTRIBUTORS

Spaceworks
Aerospace Consulting & Engineering
EAGLE
ENGINEERING, INC.
(713) 338-2682

WECO ELECTRICAL
Problems? Modifications?
CALL THE PROS
Billy Weseman 488-2244

J*A*Y Advertising, Inc.
Full Service
Advertising & Public Relations
Graphic Design & Typesetting
John Francis, Pres. 333-5986

SPACE CITY REALTORS
16808 El Camino Real--488-3383
Charles Whynot, Owner
VENTURE CAPITAL (resid + comm.)

BOB WREN

-CHARLES ALBER-
FARMERS INSURANCE
713-480-5666

THE CENTAUR STORE
"For Treasured Gifts"
114 W. Bay Area Blvd
Webster - 554-4714

DOS MAS
Mexican Food
Hwy 3/Bay Area Blvd/Webster
David Cantu, Owner

Tom Wier
Investor-Entrepreneur



From the Board of Directors, R.I.

Fourth Meeting of Board in 1985-86

STATEMENT OF OFFICIAL POLICY OF ROTARY INTERNATIONAL REGARDING MEMBERSHIP BY FEMALES FOLLOWING THE MARCH 17 DECISION OF THE CALIFORNIA COURT OF APPEAL IN THE CASE OF THE FORMER ROTARY CLUB OF DUARTE, CALIFORNIA, U.S.A.

On 28 May, 1986, the board agreed to the following statement:

On March 17, 1986, the California (U.S.A.) Court of Appeal, reversing a decision of the trial court favorable to Rotary, held that Rotary International and its local clubs in California are business establishments under the laws of that State, and, as such, are prohibited from excluding females from membership. Rotary International disagrees with this judgment for many reasons. Rotary International is an association of service clubs. The million club members in the U.S.A. and 159 other countries *give* service to their communities, as volunteers, rather than receiving services or privileges. Its policies prohibit members seeking any commercial advantages from membership. It is incredible and unacceptable to Rotary International that a voluntary organization such as Rotary, which each year provides more than \$300 million worth of services to improve communities, which sends each year 10,000 young people on international exchanges, and which is immunizing the world's children against polio — all done without regard to race, sex, creed, or nationality — be likened to commercial business establishments.

Furthermore, the decision of the Court of Appeal gravely impairs First Amendment rights of associational freedoms which have been upheld by the United States Supreme Court in numerous decisions with implications concerning all of Rotary's membership regulations, not merely those relating to sex.

For these reasons, the Board of Directors of Rotary International has authorized a petition to the California Supreme Court to review and reverse the decision of the Court of Appeal. Pending disposition of the petition for review, the decision of the Court of Appeal does not require Rotary International to readmit the former Rotary Club of Duarte or to recognize its female members as Rotarians. Furthermore, the California Court of Appeal decision was rendered under a California statute and by its own terms does not constitute controlling authority under the laws of any other state or country. The Rotary International Constitution, as recently reviewed and reaffirmed by the Council of Legislation, does not permit female membership in local Rotary Clubs. No currently effective decision of any court has rendered that Constitution invalid or unenforceable.

In the event that the California Supreme Court declines to review the decision of the Court of Appeal, or affirms that decision, the Board of Directors has authorized the filing of an appeal with the United States Supreme Court to further pursue Rotary's right to establish its own membership rules and to enjoy the other freedoms of association guaranteed by the United States Constitution.

Accordingly, it is the official policy of Rotary International, announced by its Board of Directors on May 28, 1986, that the Constitutional prohibition against female membership be adhered to by all Rotary clubs, whether in California or elsewhere.

Recognizing nonetheless that the membership rules of Rotary and particularly those relating to male membership are of substantial concern to many Rotary clubs and Rotarians around the world, the Board of Directors of R.I. has determined that it will promptly undertake a study of Rotary's membership rules and the impact of possible changes. With the benefit of this study, which will include a survey of Rotary club attitudes worldwide, the Board will, acting in the best interests of Rotary consider submission of appropriate legislation at the earliest possible time, the 1989 Council on Legislation.



WELCOME OUR **NEW MEMBERS--**

(pictured at left)

E. I. (Eddie) Tarin joined us June 23 under the sponsorship of **Don Kirk**. Eddie's classification will be "Real Estate-Consultant". He is a native of Texas City and lives there now at 1513 22nd Ave. No. (77590; phone 409-945-9096) with his wife Bettye. He is the owner of E. I. Tarin And Co., Inc, 18333 Egret Bay Blvd, 77058, phone 333-1782. Eddie is an Aggie who was a member of the Texas City Rotary Club.



Don Kirk has been busy. He also sponsored **John Towner**, V.P. and Manager of City Fed Mortgage Co., located at 18333 Egret Bay Blvd, 77058, phone 333-5160. John is a native of Oklahoma City but he graduated from high school at Clear Creek High School and attended Sam Houston State University. John lives with his wife Paula and their two children at 1906 Acacia in League City, 77573, phone 332-4641.

June 30, **Carlos Villagomez** sponsored **Gustavo L. (Gus) Ruiz** for membership in the club under the classification "Business Services-Consultant". Gus is a native of Piedras Negras, Mexico, who received a BBA majoring in accounting at Texas A&I University. He is now owner of Marcoin Business Services, 17629 El Camino Real, 209-A, 77058, phone 486-095d7. Gus and his wife Bertha Maria live at 1718 El Dorado Blvd, 77062, phone 280- 8012. They have five children, ages 8-18.

FRANK & ERNEST/by Bob Thaves

TO
ROTARY



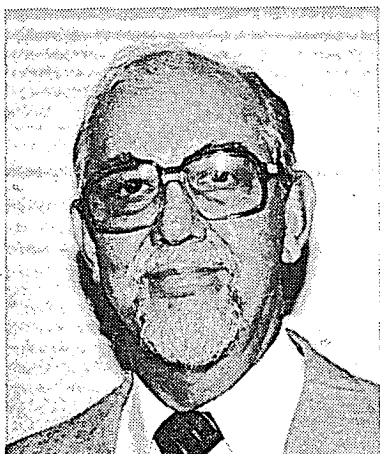
MAYBE A
FEW LESS
SLIDES
NEXT
TIME !

© 1986 by NEA, Inc. 5-14

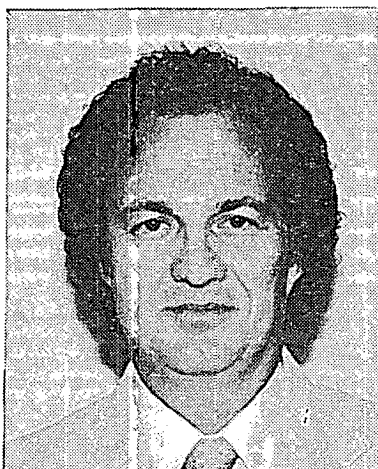
Gus and John "received the rites" from new District 589 Governor Walt Lockey.

THE NEW AND THE NOT-SO-NEW

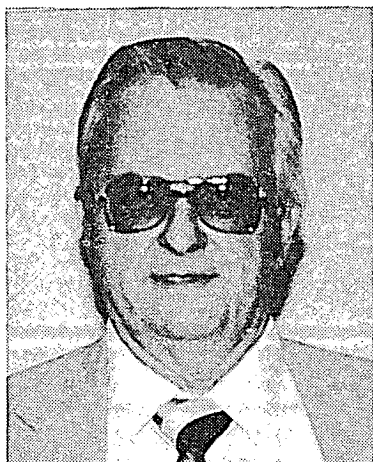
DO YOU KNOW THESE MEMBERS?



Hartman



Taylor



Hughes



Hooi

Charles Hartman is a past president of both our club and another Rotary Club, and was secretary of our club for a long time. Charles is the epitome of service above self, currently serving on committees for Space Awards Dinner, new facilities, district level work, and the Rotary World Health Fdn. He brings wisdom and experience.

David Taylor has played a leading role in our international youth exchange work--both in sending and receiving youthful guests. He has "intensive care" regard for the feelings of the youth and for making visitors feel comfortable while here.

Merv Hughes is a long time Rotarian who had a role in getting the Shrimporree started by bringing the right people together. He has served well on the Program Committee, bringing us some important speakers.

Cheng Hooi, a member since 1980, has served through our international committees. On his trips to the orient, he keeps up his Rotary contacts and has brought us new ideas, one of which we have just initiated: Polaroid photographing guests from far away, and giving it to them as an instant souvenir.

SPACE CENTER ROTARY



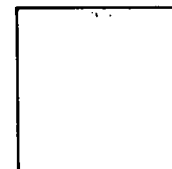
P.O. Box 58862
Houston, TX 77258

Officers

President	Jim Hargrove
President Elect	Jim McNatt
Secretary	Billy Weseman
Treasurer	John Watson
Sergeant-at-Arms	Charles Hardwick
Past President	Bob Wren
Ex-Officio, PDG	Floyd Boze

Directors

Terry Hesson	Billy Smith
Don Robison	Ralph Schimmel
Lamar Bowles	Jack Lister
Joe Shirley	John Francis
Jim Kennedy	



FIRST CLASS